

[INCH-POUND]
A-A-55485/6B
7 March 2003
SUPERSEDING
A-A-55485/6A
June 1, 1995

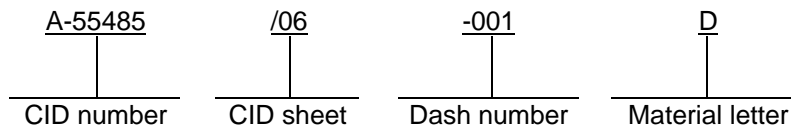
COMMERCIAL ITEM DESCRIPTION
SPECIFICATION SHEET

MOUNTING PADS, ELECTRICAL-ELECTRONIC COMPONENT,
FOR RELAYS AND DISCRETE COMPONENTS

The General Services Administration has authorized the use of this commercial item description (CID) as a replacement for MIL-M-38527/6 for all federal agencies.

The complete requirements for procuring the mounting pads described herein shall consist of this document and the issue in effect of CID A-A-55485.

CLASSIFICATION/PART OR IDENTIFICATION NUMBER (PIN). This CID uses a classification system which is included in the Part Identification Number (PIN) as shown in the following example (see NOTES).



SALIENT CHARACTERISTICS.

Interface and physical dimensions. Mounting pads supplied to this CID shall be as specified herein (see figure 1).

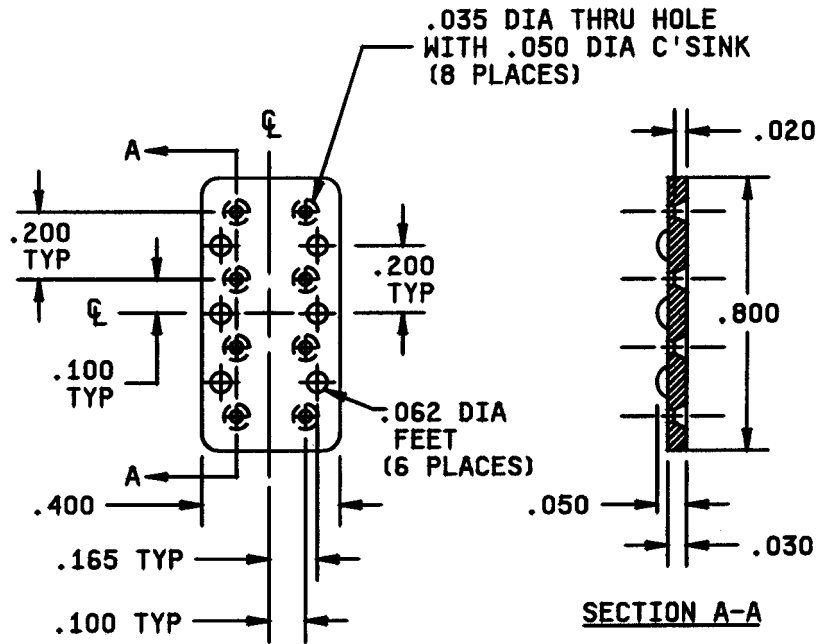
Material. Material shall be diallyl phthalate (D) nylon (N), or polyterephthalate thermoplastic (C).

Marking. Not applicable.

NOTES.

PIN. The PIN should be used for Government purposes to buy commercial products to this CID. See classification information for PIN format example.

A-A-55485/6B

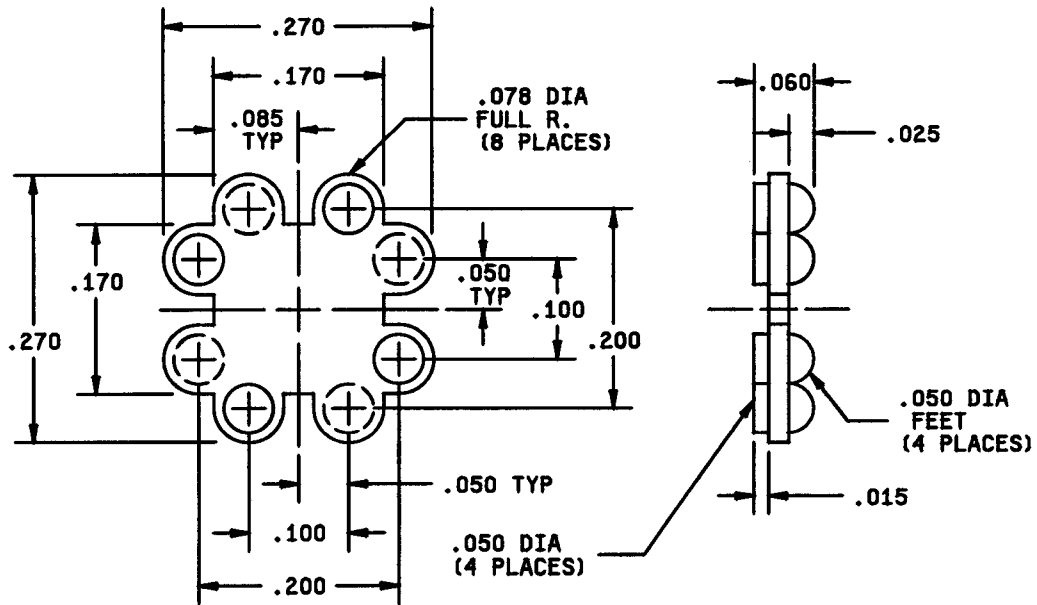


A-55485/06-001

Inches	mm
.005	0.13
.020	0.51
.030	0.76
.035	0.89
.050	1.27
.062	1.57
.100	2.54
.165	4.19
.200	5.08
.400	10.16
.800	20.32

FIGURE 1. Configurations and dimensions.

A-A-55485/6B

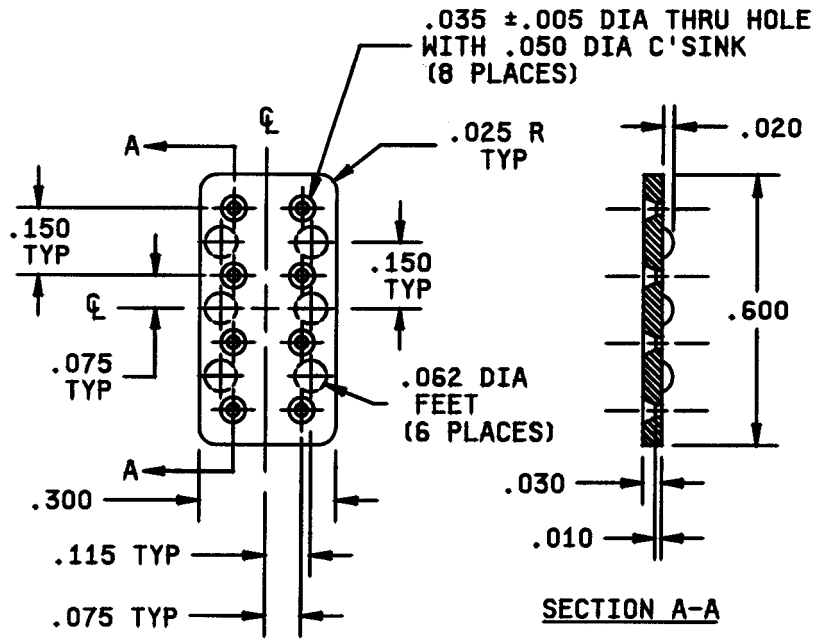


A-55485/06-002

Inches	mm
.015	0.38
.025	0.64
.050	1.27
.060	1.52
.078	1.98
.085	2.16
.100	2.54
.170	4.32
.200	5.08
.270	6.86

FIGURE 1. Configurations and dimensions - Continued.

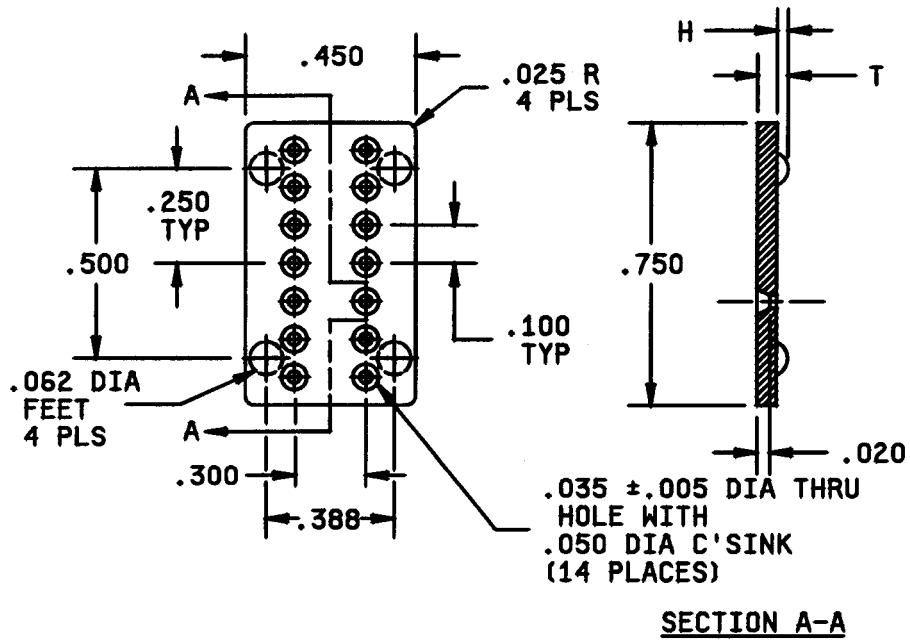
A-A-55485/6B



A-55485/06-003

Inches	mm
.005	0.13
.010	0.25
.020	0.51
.025	0.64
.030	0.76
.035	0.89
.050	1.27
.062	1.57
.075	1.90
.115	2.92
.150	3.81
.300	7.62
.600	15.24

FIGURE 1. Configurations and dimensions - Continued.

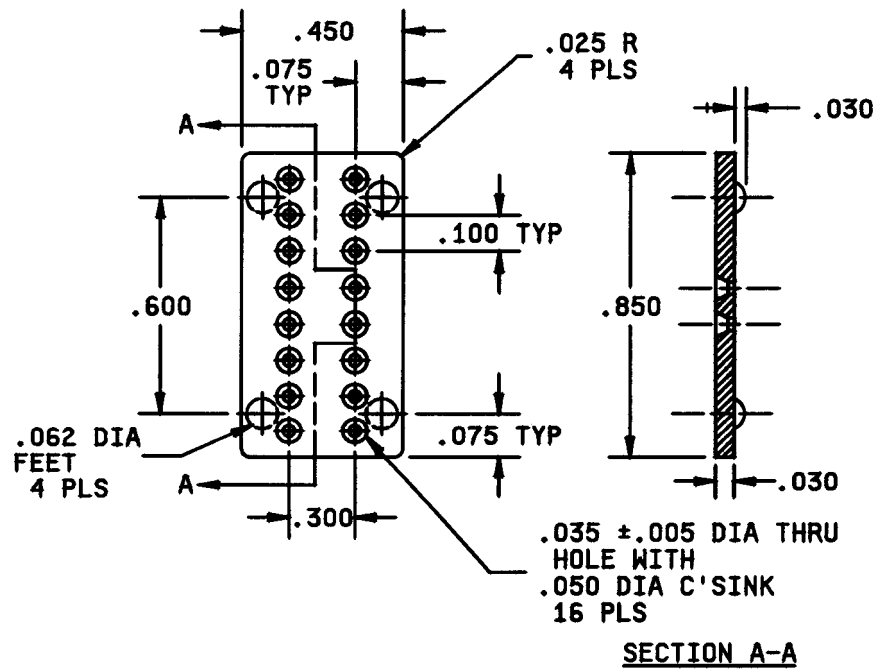


PIN A-55485/06-	H	T
004	no feet	.030 (0.76)
005	.020 Min (0.51)	.065 Max (1.65)
006	.050 (1.27)	.080 (2.03)

Inches	mm
.020	0.38
.025	0.64
.035	1.27
.040	1.52
.062	1.98
.100	2.16
.250	2.54
.300	4.32
.388	5.08
.450	6.86
.750	19.05

FIGURE 1. Configurations and dimensions - Continued.

A-A-55485/6B

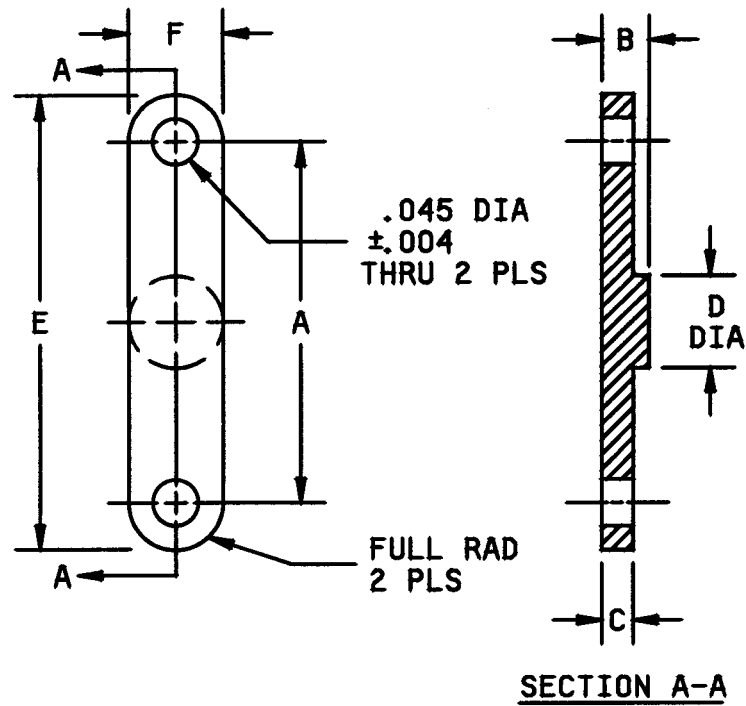


A-55485/06-007

Inches	mm
.025	0.64
.030	0.76
.035	0.89
.050	1.27
.062	1.57
.075	1.91
.100	2.54
.300	7.62
.450	11.43
.600	15.24
.850	21.59

FIGURE 1. Configurations and dimensions - Continued.

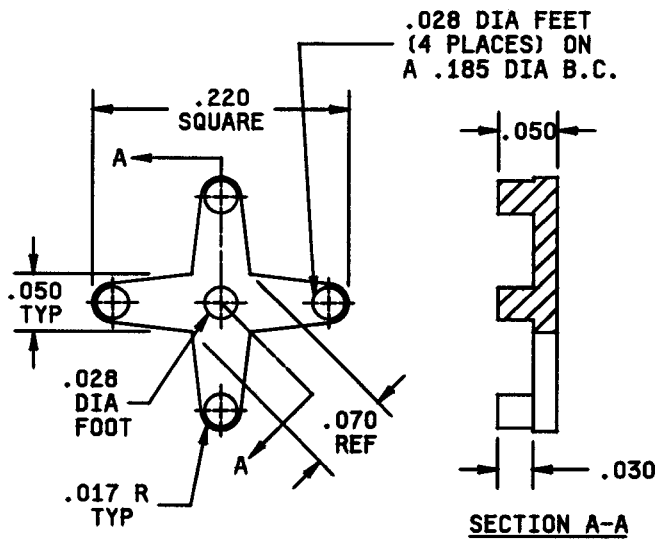
A-A-55485/6B



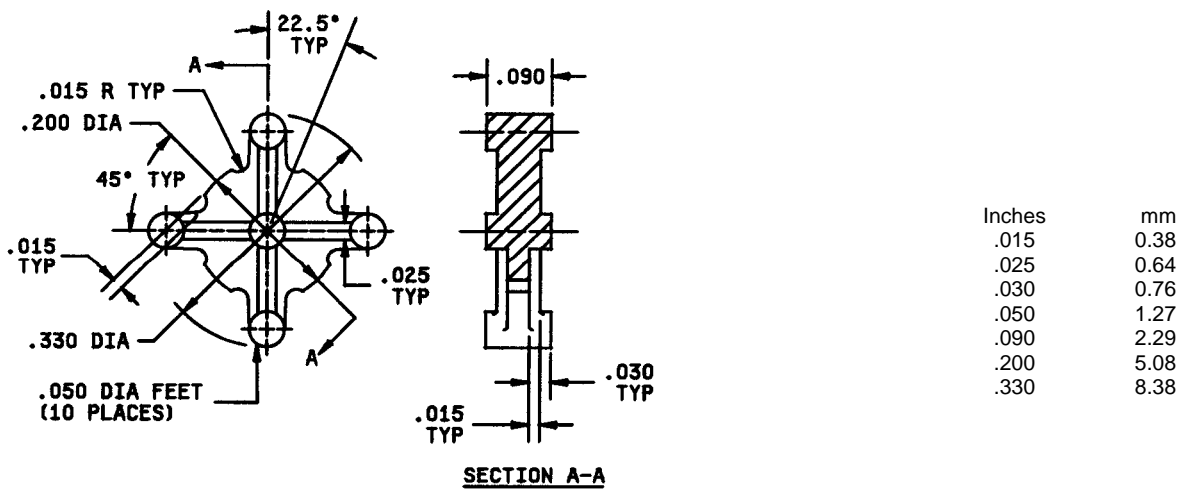
PIN A-55485/06-	A	B	C	D	E	F
008	.100 (2.54)	.045 (1.14)	.022 (.54)	.050/.070 (1.27)(1.78)	.180 (4.57)	.090 (2.29)
009	.150 (3.81)	.045 (1.14)	.022 (.54)	.090/.125 (2.29)(3.18)	.270 (6.86)	.125 (3.18)
010	.200 (5.08)	.045 (1.14)	.022 (.54)	.090 (2.29)	.290 (7.37)	.090 (2.29)
017	.250 (6.36)	.045 (1.14)	.026 (.82)	.090 (2.29)	.340 (8.89)	.090 (2.29)
018	.300 (7.62)	.045 (1.14)	.026 (.82)	.140 (3.81)	.390 (9.91)	.090 (2.29)
019	.350 (8.90)	.045 (1.14)	.030 (.76)	.140 (3.81)	.440 (11.18)	.090 (2.29)
020	.400 (10.16)	.045 (1.14)	.030 (.76)	.190 (4.82)	.490 (12.45)	.090 (2.29)
021	.500 (12.7)	.045 (1.14)	.030 (.76)	.190 (4.82)	.590 (14.99)	.090 (2.29)

FIGURE 1. Configurations and dimensions - Continued.

A-A-55485/6B



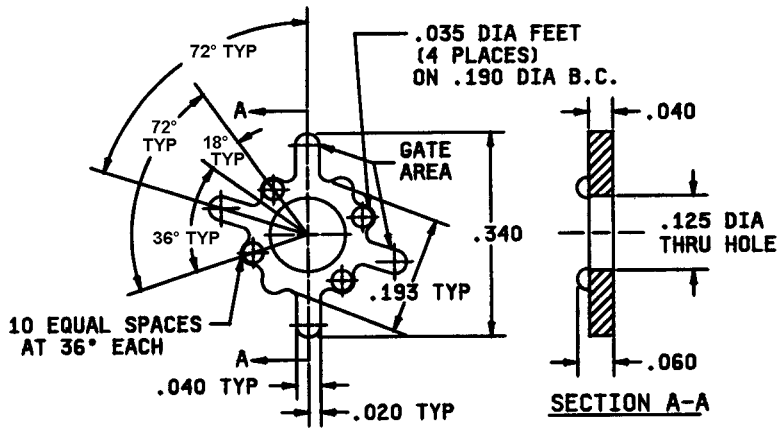
A-55485/06-011



A-55485/06-012

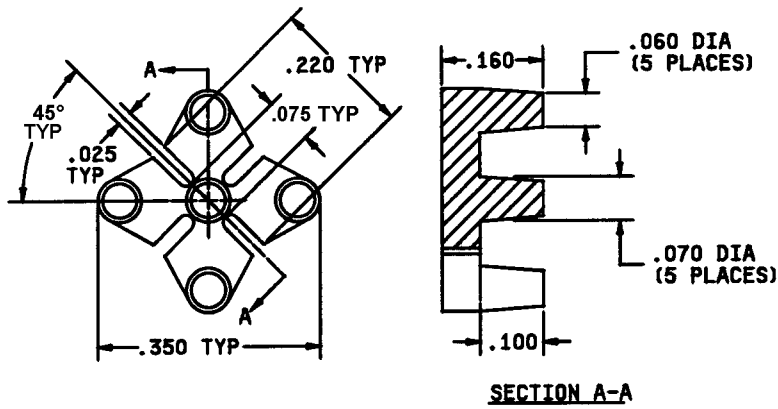
FIGURE 1. Configurations and dimensions - Continued.

A-A-55485/6B



Inches	mm
.020	0.51
.035	0.89
.040	1.02
.060	1.52
.125	3.18
.190	4.83
.193	4.90
.340	8.64

A-55485/06-013

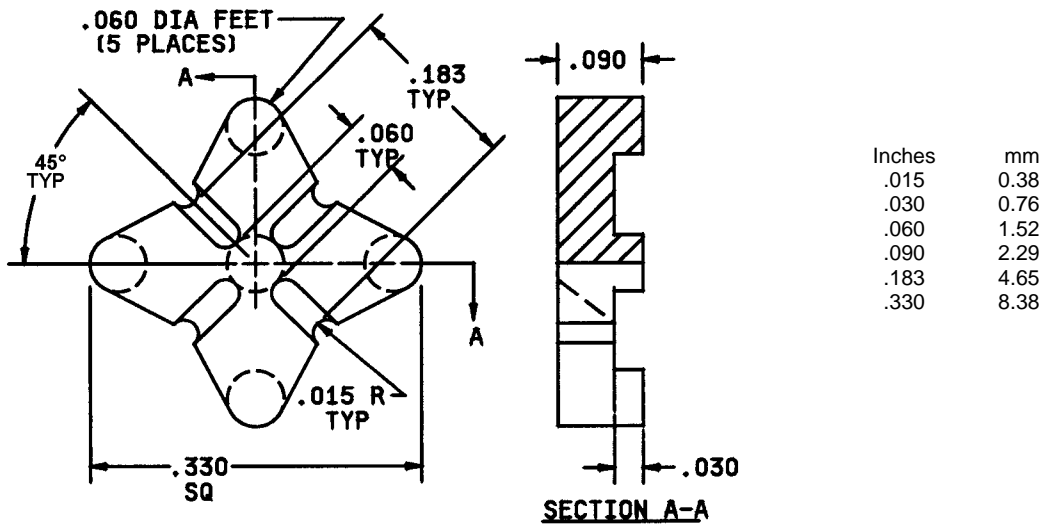


Inches	mm
.025	0.64
.060	1.52
.070	1.78
.075	1.91
.100	2.54
.160	4.06
.220	5.59
.350	8.89

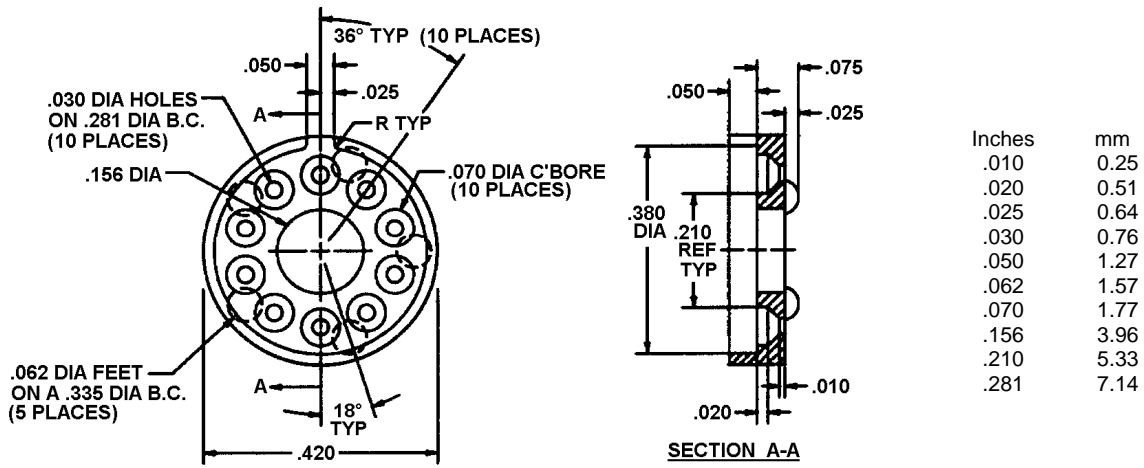
A-55485/06-014

FIGURE 1. Configurations and dimensions - Continued.

A-A-55485/6B



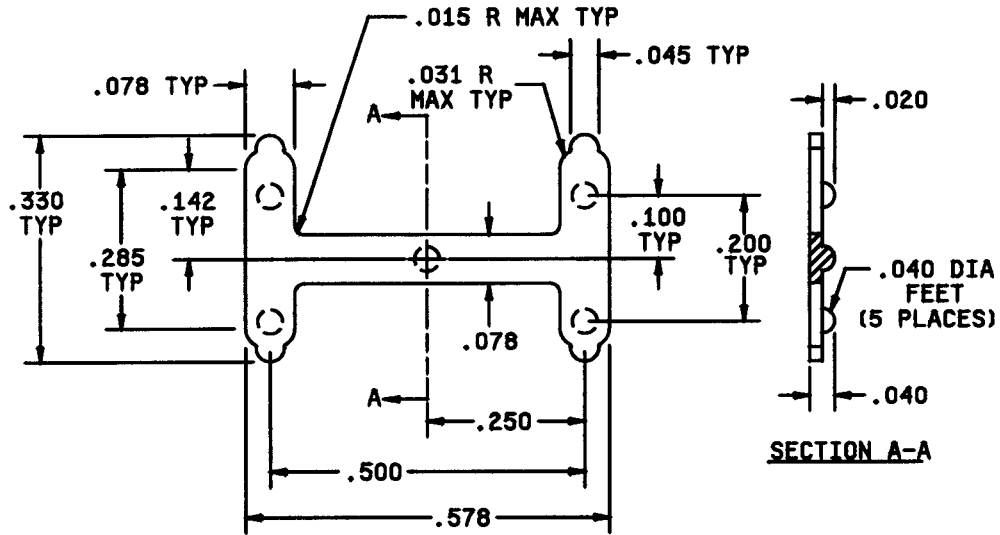
A-55485/06-015



A-55485/06-016

FIGURE 1. Configurations and dimensions - Continued.

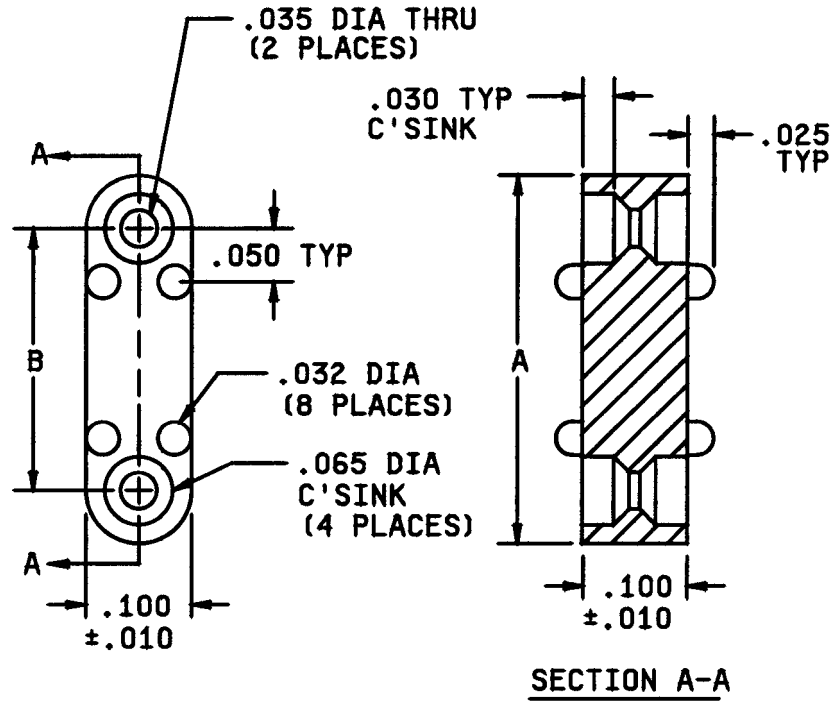
A-A-55485/6B



A-55485/06-022

Inches	mm
.015	0.38
.020	0.51
.031	0.71
.040	1.02
.045	1.14
.078	1.98
.100	2.54
.142	3.61
.200	5.08
.250	6.35
.285	7.24
.330	8.38
.500	12.70
.578	14.60

FIGURE 1. Configurations and dimensions - Continued.

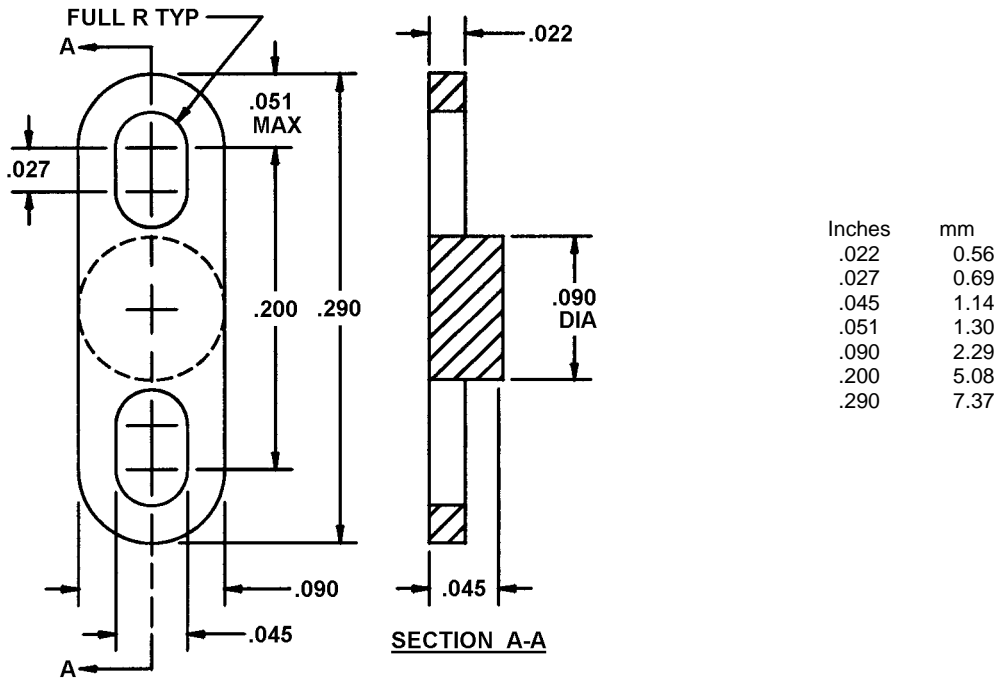


Inches	mm
.025	0.64
.030	0.76
.032	0.81
.035	0.89
.050	1.27
.065	1.65
.100	2.54

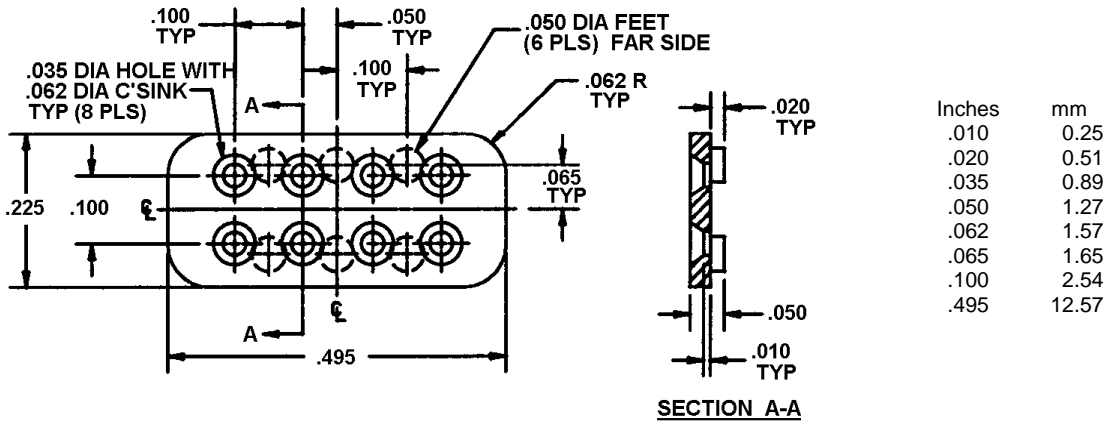
PIN A-55485/06-	A	B	PIN A-55485/06	A	B
023	.300 (7.62)	.200 (5.08)	026	.450 (11.43)	.350 (8.89)
024	.350 (8.89)	.250 (6.35)	027	.500 (12.70)	.400 (10.16)
025	.400 (10.16)	.300 (7.62)	028	.600 (15.24)	.500 (12.70)

FIGURE 1. Configurations and dimensions - Continued.

A-A-55485/6B



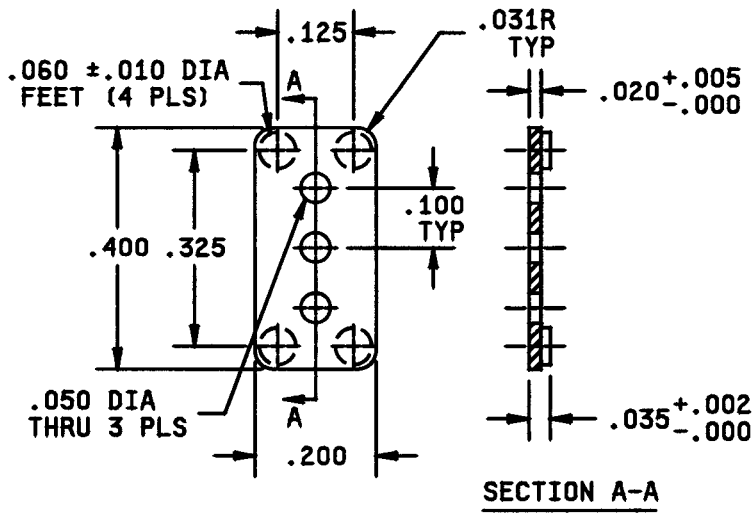
A-55485/06-043



A-55485/06-044

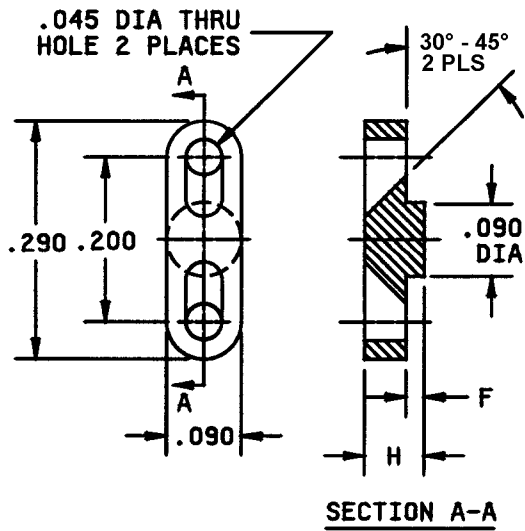
FIGURE 1. Configurations and dimensions - Continued.

A-A-55485/6B



Inches	mm
.002	0.05
.005	0.13
.020	0.51
.031	0.79
.035	0.89
.050	1.27
.060	1.52
.100	2.54
.125	3.18
.200	5.08
.325	8.26
.400	10.16

A-55485/06-045

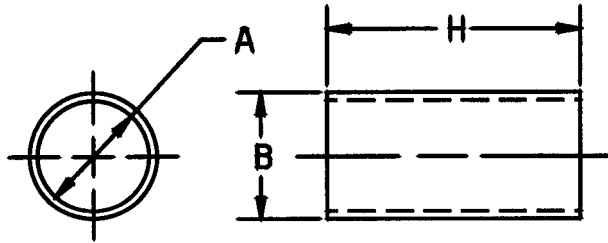


Inches	mm
.022	0.56
.035	0.89
.045	1.14
.050	1.27
.072	1.83
.085	2.16
.090	2.29
.200	5.08
.290	7.37

PIN	H	F
A55485/06-046	.072	.022
047	.050	.000
048	.085	.035

FIGURE 1. Configurations and dimensions - Continued.

A-A-55485/6B



PIN 1/ A55485/06	Dimension			PIN 1/ A55485/0 6	Dimension		
	"A" ±.005 (0.13 mm)	"B" ±.005 (0.13 mm)	"H" 1/ 2/		"A" ±.005 (0.13 mm)	"B" ±.005 (0.13 mm)	"H"
A	.028 (0.71)	.085 (2.16)	.030 - 1.250 (0.76)-(31.75)	H	.063 (1.60)	.187 (4.75)	.030 - 1.250 (0.76)-(31.75)
B	.032 (0.81)	.085 (2.16)	.030 - 1.250 (0.76)-(31.75)	J	.091 (2.31)	.187 (4.75)	.030 - 1.250 (0.76)-(31.75)
C	.032 (0.81)	.125 (3.18)	.030 - 1.250 (0.76)-(31.75)	K	.120 (3.05)	.187 (4.75)	.030 - 1.250 (0.76)-(31.75)
D	.047 (1.19)	.125 (3.18)	.030 - 1.250 (0.76)-(31.75)	L	.091 (2.31)	.250 (6.35)	.030 - 1.250 (0.76)-(31.75)
E	.085 (2.16)	.148 (3.76)	.030 - 1.250 (0.76)-(31.75)	M	.115 (2.92)	.250 (6.35)	.030 - 1.250 (0.76)-(31.75)
F	.047 (1.19)	.156 (3.96)	.030 - 1.250 (0.76)-(31.75)	N	.147 (3.73)	.250 (6.35)	.030 - 1.250 (0.76)-(31.75)
G	.105 (2.67)	.167 (4.24)	.030 - 1.250 (0.76)-(31.75)	P	.171 (4.34)	.250 (6.35)	.030 - 1.250 (0.76)-(31.75)

1/ Cylindric standoffs have a unique PIN format which must be used when ordering. A letter (A through P in the first column above) is keyed to the desired "A" and "B" dimensions and is used as the basic dash number. The desired "H" dimension (from .030 to 1.250 in .005 inch increments) is then called out using a four-digit number (no decimals). For example, a desired "H" dimension of .030 inch would be shown in the PIN as 0030. A desired "H" dimension of 1.005 inch would be shown in the PIN as 1005. An "H" dimension of 1.250 inch would be shown in the PIN as 1250. The final digit of the PIN shall be a letter (D, N, or C) to denote the desired material. Complete PIN examples: A55485/06B0085D; A55485/06F0935N; A55485/06P1225C.

2/ The following tolerances apply to dimension H:
 .030 (0.76 mm) to .500 (12.70 mm): ±.005 (0.13 mm).
 .505 (12.83 mm) to .750 (19.05 mm): ±.008 (0.20 mm).
 .755 (19.18 mm) to 1.250 (31.75 mm): ±.015 (0.38 mm).

NOTES:

1. Dimensions are in inches.
2. Metric equivalents are given for general information only.
3. Tolerance on height of pads shall be ±.015 (0.38 mm), unless otherwise specified.
4. Tolerances are ±.010 (0.25 mm) for decimals and ±1° on angles, unless otherwise specified.
5. A .010 (0.25 mm) radius is permissible on corners and edges and a 1° draft is permitted on sides.

FIGURE 1. Configurations and dimensions - Continued.

A-A-55485/6B

TABLE I. Supersession data.

Superseded PIN in accordance with MIL-M-38527/6D M38527/06-	Replacement CID PIN in accordance with A-A-55485/6, dated September 30, 1993: A-55485/06-	^{2/} PIN changes in accordance with A-A-55475.6A dated June 1, 1995
001	001	
002	002	
003	003	
004	004	
005	005	
006	006	
007	007	
008	008	
009	009	
010	010	
011	011	
012	012	
013	013	
014	014	
015	015	
016	016	
017	017	
018	018	
019	019	
020	020	
021	021	
022	022	
023	023	
024	024	
025	025	
026	026	
027	027	
028	028	
029	029	A55485/06A
030	030	A55485/06B
031	031	A55485/06C
032	032	A55485/06D
033	033	A55485/06E
034	034	A55485/06F
035	035	A55485/06G
036	036	A55485/06H
037	037	A55485/06J
038	038	A55485/06K
039	039	A55485/06L
040	040	A55485/06M
041	041	A55485/06N
042	042	A55485/06P
043	043	
044	044	
045	045	
046	046	
047	047	
048	048	

1/ All PIN's shall include a suffix letter (D, N, or C) to denote the material. The suffix letters in MIL-M-38527 and A-A55485 are identical.

2/ New PIN's for superseded dash numbers -029 through -042 shall include a 4-digit "H" dimension callout (see figure 1).

A-A-55485/6B

TABLE II. Suggested sources of supply. 1/

2/ CID PIN (see figure 1) A-55485/06-	Vendor commercial PIN 3/						
	CAGE code 0ZK84	CAGE code 30161	CAGE code 21071	4/ CAGE code 24227	4/ CAGE code 32559	5/ CAGE code 53174	4/ CAGE code 54355
001D	10105D	7717-175D	10364-2			AP-128/D	965-982D
001N	10105N	7717-175N	10364-1			AP-128/N	965-982N
001C			10364-3			AP-128/GP	965-982C
002D	10511D		10802-2			AP-402/D	965-592D
002N	10511N		10802-1			AP-402/N	965-592N
002C			10802-3			AP-402/GP	965-592C
003D	10537D	7717-129N	10760-2			AP-481/D	965-579D
003N	10537N		10760-1			AP-481/N	965-579N
003C			10760-3			AP-481/GP	965-579C
004D	10557D		10862-2			DIP-14-82/D	965-619D
004N	10557N		10862-1	4130	814-030	DIP-14-82/N	965-619N
004C			10862-3			DIP-14-82/GP	965-619C
005D	10558D	7717-156N				DIP-14-84/D	965-664D
005N	10558N			4160	814-060	DIP-14-84/N	965-664N
005C							
006D	10559D		10866-2			DIP-14-80/D	965-665D
006N	10559N		10866-1	4180	814-080	DIP-14-80/N	965-665N
006C			10866-3			DIP-14-80/GP	965-665C
007D	10560D						
007N	10560N			4360	816-060	DIP-16-85/N	965-663N
007C							
008D	10561D		10852-2			CX-010/D	965-609D
008N	10561N		10852-1	8100	300-100	CX-010/N	965-609N
008C			10852-3			CX-010/GP	965-609C
009D	10562D		10832-2			CX-015/D	965-669D
009N	10562N		10832-1	8150	301-150	CX-015/N	965-669N
009C			10832-3			CX-015/GP	965-669C
010D	10563D		10854-2			CX-020/D	965-671D
010N	10563N		10854-1	8200	302-200	CX-020/N	965-671N
010C			10854-3			CX-020/GP	965-671C
011D	10259D		10686-2			AP-504/D	965-673D
011N	10259N						
011C			10686-3				965-673C
012D	10134D		10324-2			AP-227/D	965-598D
012N	10134N		10324-1			AP-227/N	965-598N
012C			10324-3			AP-227/GP	965-598C

See footnotes at end of table.

A-A-55485/6B

TABLE II. Suggested sources of supply - Continued. 1/

<u>2/</u> CID PIN (see figure 1) A-55485/06-	Vendor commercial PIN <u>3/</u>						
	CAGE code 0ZK84	CAGE code 30161	CAGE code 21071	<u>4/</u> CAGE code 24227	<u>4/</u> CAGE code 32559	<u>5/</u> CAGE code 53174	<u>4/</u> CAGE code 54355
013D	10010D						
013N	10010N						
013C							
014D	10265D						
014N	10265N						
014C							
015D	10269D		10546-2			AP-435/D	965-677D
015N	10269N		10546-1			AP-436/N	965-677N
015C			10546-3			AP-436/GP	965-677C
016D	10235D						
016N	10235N						
016C							
017D	10581D						
017N	10581N			8250	303-250	CX-2014/N	965-825N
017C							
018D	10582D		10562-2			CX-2015/D	965-830D
018N	10582N		10562-1	8300	304-300	CX-2015/N	965-830N
018C			10562-3			CX-2015/GP	965-830C
019D	10583D						
019N	10583N			8350	305-350	CX-2016/N	965-835N
019C							
020D	10584D		10565-2			CX-2017/D	965-840D
020N	10584N		10565-1	8400	306-400	CX-2017/N	965-840N
020C			10565-3			CX-2017/GP	965-840C
021D	10585D		10566-2			CX-2018/D	965-850D
021N	10585N		10566-1	8500	307-500	CX-2018/N	965-850N
021C			10566-3			CX-2018/GP	965-850C
022D	10634D					AP-505/D	965-754D
022N	10634N						965-754N
022C							965-754C
023D	10630D						
023N		7731		8201	311-200	CX-8201/N	965-686N
023C							
024D	10586D						
024N	10586N	7732		8202	312-250	CX-8202/N	965-688N
024C							

See footnotes at end of table.

A-A-55485/6B

TABLE II. Suggested sources of supply - Continued. 1/

<u>2/</u> CID PIN (see figure 1) A-55485/06-	Vendor commercial PIN <u>3/</u>						
	CAGE code 0ZK84	CAGE code 30161	CAGE code 21071	<u>4/</u> CAGE code 24227	<u>4/</u> CAGE code 32559	<u>5/</u> CAGE code 53174	<u>4/</u> CAGE code 54355
025D							
025N		7733		8203	313-300	CX-8203/N	965-689N
025C							
026D	10587D						
026N	10587N	7734		8204	314-350	CX-8204/N	965-756N
026C							
027D							
027N		7735		8205	315-400	CX-8205/N	965-757N
027C							
028D	10636D	7736					
028N				8206	316-500	CX-8206/N	965-691N
028C							
A55485/06AXXXD	10610D						
A55485/06AXXXN	10610N			5XXX-F	901-XXX	BX-8001-XXX/N	965-765-XXXN
A55485/06AXXXC							
A55485/06BXXXXD	10611D						
A55485/06BXXXXN	10611N				938-XXX	BX-8002-XXX/N	965-781-XXXN
A55485/06BXXXXC							
A55485/06CXXXXD							
A55485/06CXXXXN				5XXX-E	902-XXX	BX-8003-XXX/N	965-758-XXXN
A55485/06CXXXXC							
A55485/06DXXXXD							
A55485/06DXXXXN	10637N				939-XXX	BX-8004-XXX/N	965-764-XXXN
A55485/06DXXXXC							
A55485/06EXXXXD							
A55485/06EXXXXN				5XXX-A	906-XXX	BX-8005-XXX/N	965-807-XXXN
A55485/06EXXXXC							
A55485/06FXXXXD							
A55485/06FXXXXN	10612N			5XXX-G	903-XXX	BX-8006-XXX/N	965-784-XXXN
A55485/06FXXXXC							
A55485/06GXXXXD			10682-2				965-766-XXXD
A55485/06GXXXXN	10613N		10682-1	5XXX-B	907-XXX	BX-8007-XXX/N	965-766-XXXN
A55485/06GXXXXC			10682-3				965-768-XXXN
A55485/06HXXXXD							
A55485/06HXXXXN				5XXX-H	904-XXX	BX-8008-XXX/N	965-759-XXXN
A55485/06HXXXXC							

See footnotes at end of table.

A-A-55485/6B

TABLE II. Suggested sources of supply - Continued. 1/

<u>2/</u> CID PIN (see figure 1) A-55485/06-	Vendor commercial PIN <u>3/</u>						
	CAGE code 0ZK84	CAGE code 30161	CAGE code 21071	<u>4/</u> CAGE code 24227	<u>4/</u> CAGE code 32559	<u>5/</u> CAGE code 53174	<u>4/</u> CAGE code 54355
A55485/06JXXXD							
A55485/06JXXXN				5XXX-M	913-XXX	BX-8009-XXX/N	965-760-XXXN
A55485/06JXXXC							
A55485/06KXXXD							
A55485/06KXXXN				5XXX-C	908-XXX	BX-8010-XXX/N	965-801-XXXN
A55485/06KXXXC							
A55485/06LXXXD							
A55485/06LXXXN				5XXX-J	910-XXX	BX-8011-XXX/N	965-787-XXXN
A55485/06LXXXC							
A55485/06MXXXD							
A55485/06MXXXN	10594N			5XXX-K	911-XXX	BX-8012-XXX/N	965-791-XXXN
A55485/06MXXXC							
A55485/06NXXXD			10640-2				965-770-XXXD
A55485/06NXXXN			10640-1	5XXX-D	905-XXX	BX-8013-XXX/N	965-770-XXXN
A55485/06NXXXC			10640-3				965-770-XXXC
A55485/06PXXXD							
A55485/06PXXXN				5XXX-L	912-XXX	BX-8014-XXX/N	965-797-XXXN
A55485/06PXXXC							
043D							
043N	10619N					CX-09-020/N	
043C						CX-09-020/GP	
044D	10275D						
044N	10275N						
044C							
045D	10381D						
045N	10381N						
045C							
046D	10580D						
046N	10580N				330-072	AP-498/N	965-847-XXXN
046C							
047D	10602D		10828-2				965-845D
047N	10602N		10828-1		330-050	AP-444/N	965-845N
047C			10828-3				965-845C
048D	10603D		10406-2				965-848D
048N	10603N		10406-1		330-085		965-848N
048C			10406-3				965-848C

1/ This table is not a qualified products list or an approved source list. The vendors listed have submitted Certificates of Compliance (see A-A-55485) to DSCC-VAT; however, parts may be ordered from any manufacturer who agrees to supply products that meet all the requirements of this CID.

2/ XXXX in the PIN represents the "H" dimension in figure 1 (cylindric-shaped standoffs only).

3/ Vendor commercial PIN's are given for reference only. Do not use these numbers for ordering purposes.

4/ CAGES 24227, 32559, and 54355: XXX in the PIN represents the "H" dimension.

5/ CAGE 53174: XXX in the PIN represents the "H" dimension. Nylon is standard material; other materials may be available and will be quoted on request.

NOTES.

Commercial products. As part of the market analysis and research effort, this CID was coordinated with the following manufacturers of commercial products. At the time of CID preparation and coordination, these manufacturers were known to have commercial products that would meet the requirements of this CID. (NOTE: This information should not be considered as a list of approved manufacturers or be used to restrict procurement to only the manufacturers shown.)

<u>MFR's CAGE</u>	<u>MFR's name and address</u>	<u>MFR's CAGE</u>	<u>MFR's name and address</u>
0ZK84	Micro-Dimensional Products, Inc 548 North Trooper Road Norristown, PA 19403-4536 (610) 630-4658 http://www.microdimensional.com	24227	Teknational Industries, Inc. 391 Gregory Street Rochester, NY 14620 (585) 473-6310 http://www.teknational.com
30161	Aavid Thermalloy 80 Commercial Street Concord, NH 03301 (603) 224-9988 http://www.aavidthermalloy.com	32559	Bivar, Inc. 4 Thomas Irvine, CA 92718-2512 (949) 951-8808 http://www.bivar.com
21071	Globe Plastics, Inc. 13477 Twelfth Street Chino, CA 91710-5206 (909) 464-1520 http://www.globecomposites.com	53174	APX Plastics Company 3407 Dalworth Street Arlington, TX 76011-6815 (817) 275-3883 http://www.apxplastics.com
		54355	Accessories For Electronics, Inc. 195-Q Central Avenue E. Farmingdale, NY 11735 (631) 847-0158 http://www.afeaccess.com

MILITARY INTERESTS:

Custodians:
Army - CR
Navy - EC
Air Force - 11
DLA - CC

CIVIL AGENCY COORDINATING ACTIVITY:

GSA - 7FXE

Preparing activity:

DLA - CC

(Project 5999-0389-03)