

[INCH-POUND]  
A-A-55485/5C  
14 August 2020  
SUPERSEDING  
A-A-55485/5B  
10 August 2015

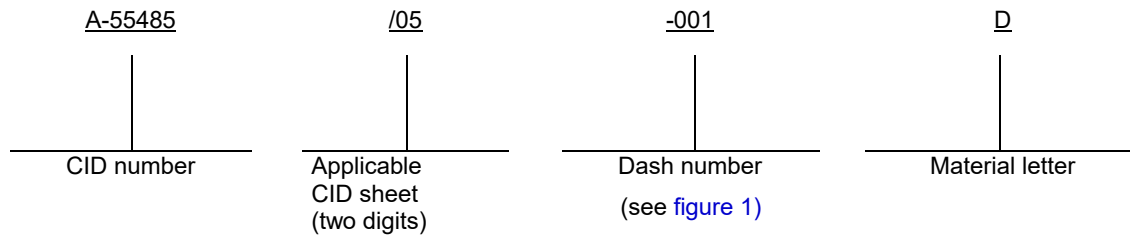
COMMERCIAL ITEM DESCRIPTION  
SPECIFICATION SHEET

MOUNTING PADS, ELECTRICAL-ELECTRONIC COMPONENT,  
LEAD CONVERSION, .200 or .230 DIAMETER PIN CENTER TO A GRID PATTERN

The General Services Administration has authorized the use of this  
commercial item description (CID) as a replacement for  
MIL-M-38527/5D for all federal agencies.

The complete requirements for procuring the mounting pads described herein shall consist of this document and the  
issue in effect of CID [A-A-55485](#).

CLASSIFICATION OR PART IDENTIFICATION NUMBER (PIN). This commercial item description (CID)  
specification sheet uses a classification system which is included in the PIN as shown in the following example (see  
[NOTES](#)).



SALIENT CHARACTERISTICS.

Interface and physical dimensions. Mounting pads supplied to this CID shall be as specified herein (see [figure 1](#)).

Materials. Material shall be diallyl phthalate (D) or nylon (N), or polyphenylene sulfide (S).

NOTES.

PIN. The PIN should be used for Government purposes to buy commercial products to this CID specification sheet.  
See the classification section for PIN format example.

Source of documents.

COMMERCIAL ITEM DESCRIPTION

[A-A-55485](#) - Mounting Pads, Electrical-Electronic Components, General  
Requirement.

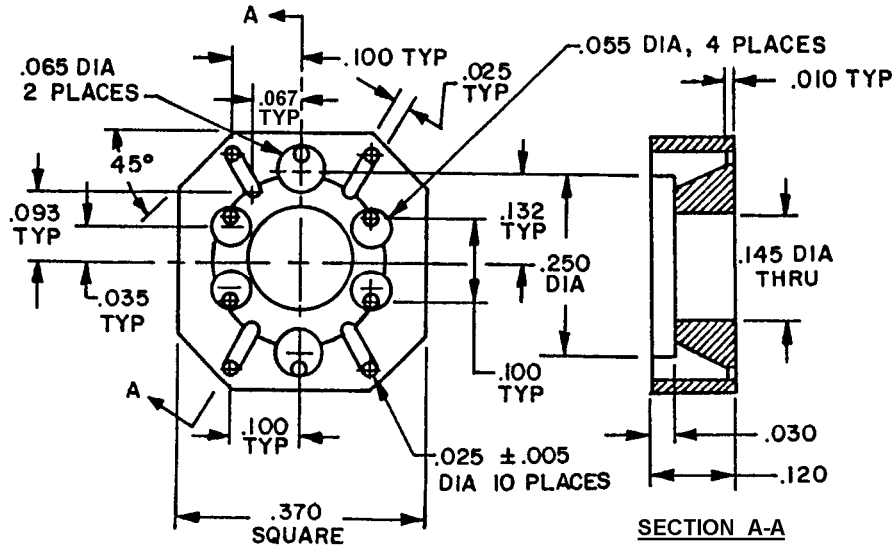
(Copies of this document are available online at <https://quicksearch.dla.mil>).

AMSC N/A

FSC 5999



A-A-55485/5C

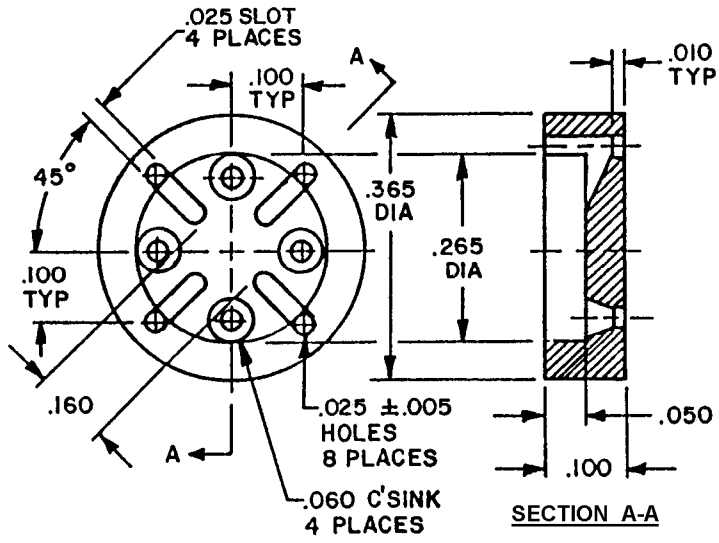


A-55485/05-001

| Inches | mm   |
|--------|------|
| .005   | 0.13 |
| .010   | 0.25 |
| .025   | 0.64 |
| .030   | 0.76 |
| .035   | 0.89 |
| .055   | 1.40 |
| .065   | 1.65 |
| .067   | 1.70 |
| .093   | 2.36 |
| .100   | 2.54 |
| .120   | 3.05 |
| .132   | 3.35 |
| .145   | 3.68 |
| .250   | 6.35 |
| .370   | 9.40 |

FIGURE 1. Configurations and dimensions.

A-A-55485/5C

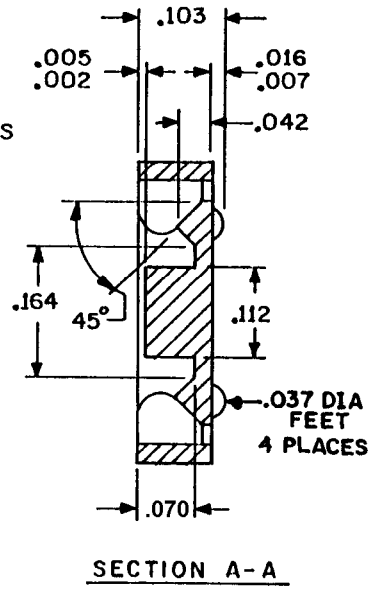
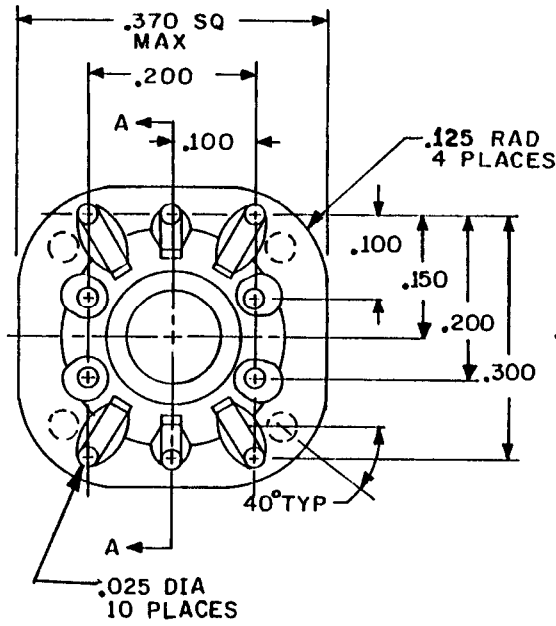


| Inches | mm   |
|--------|------|
| .005   | 0.13 |
| .010   | 0.25 |
| .025   | 0.64 |
| .050   | 1.27 |
| .060   | 1.52 |
| .100   | 2.54 |
| .160   | 4.06 |
| .265   | 6.73 |
| .365   | 9.27 |

A-55485/05-002

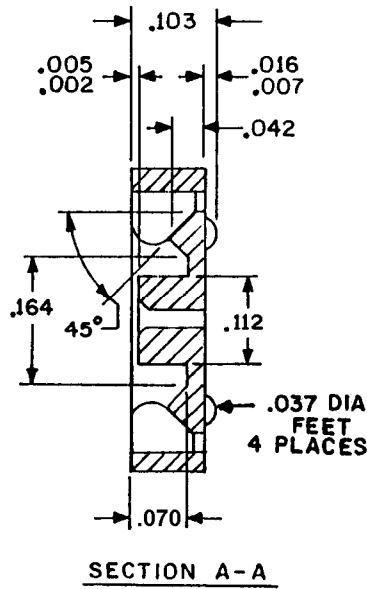
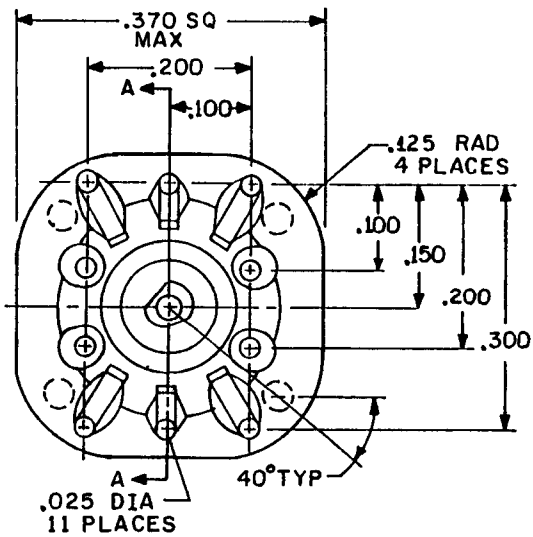
FIGURE 1. Configurations and dimensions - Continued.

A-A-55485/5C



| Inches | mm   |
|--------|------|
| .002   | 0.05 |
| .003   | 0.08 |
| .005   | 0.13 |
| .012   | 0.30 |
| .016   | 0.41 |
| .025   | 0.64 |
| .037   | 0.94 |
| .042   | 1.07 |
| .070   | 1.78 |
| .100   | 2.54 |
| .103   | 2.62 |
| .112   | 2.84 |
| .150   | 3.81 |
| .164   | 4.16 |
| .200   | 5.08 |
| .250   | 6.35 |
| .300   | 7.62 |
| .340   | 8.64 |
| .370   | 9.40 |

A-55485/05-003

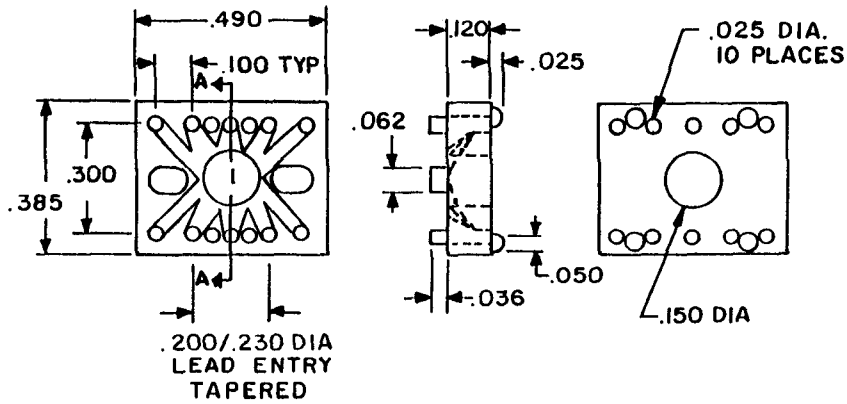


| Inches | mm   |
|--------|------|
| .002   | 0.05 |
| .003   | 0.08 |
| .005   | 0.13 |
| .012   | 0.30 |
| .016   | 0.41 |
| .025   | 0.64 |
| .037   | 0.94 |
| .042   | 1.07 |
| .070   | 1.78 |
| .100   | 2.54 |
| .103   | 2.62 |
| .112   | 2.84 |
| .150   | 3.81 |
| .164   | 4.16 |
| .200   | 5.08 |
| .250   | 6.35 |
| .300   | 7.62 |
| .340   | 8.64 |
| .370   | 9.40 |

A-55485/05-004

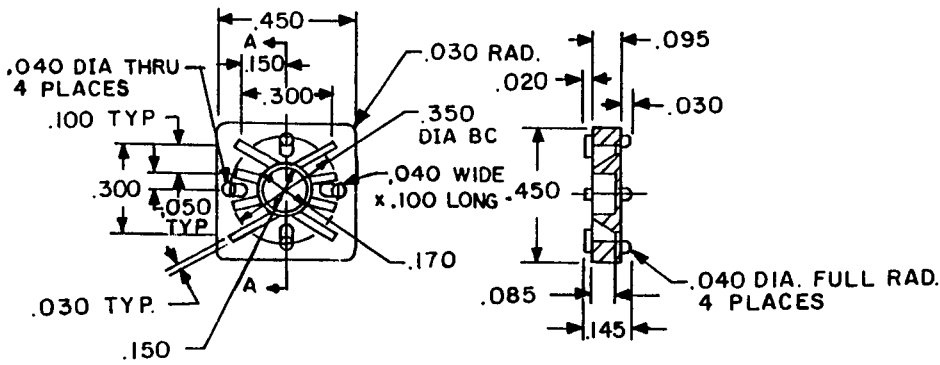
FIGURE 1. Configurations and dimensions - Continued.

A-A-55485/5C



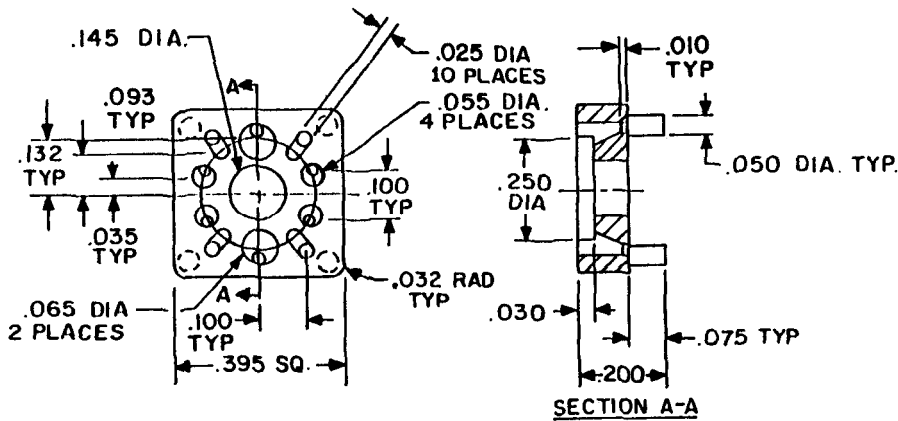
A-55485/05-005

| Inches | mm    |
|--------|-------|
| .025   | 0.64  |
| .036   | 0.91  |
| .050   | 1.27  |
| .062   | 1.57  |
| .100   | 2.54  |
| .125   | 3.18  |
| .150   | 3.81  |
| .200   | 5.08  |
| .230   | 5.84  |
| .300   | 7.62  |
| .385   | 9.78  |
| .490   | 12.45 |



A-55485/05-006

| Inches | mm    |
|--------|-------|
| .020   | 0.51  |
| .030   | 0.76  |
| .040   | 1.02  |
| .050   | 1.27  |
| .085   | 2.16  |
| .095   | 2.41  |
| .100   | 2.54  |
| .145   | 3.68  |
| .150   | 3.81  |
| .170   | 4.32  |
| .300   | 7.62  |
| .350   | 8.89  |
| .450   | 11.42 |

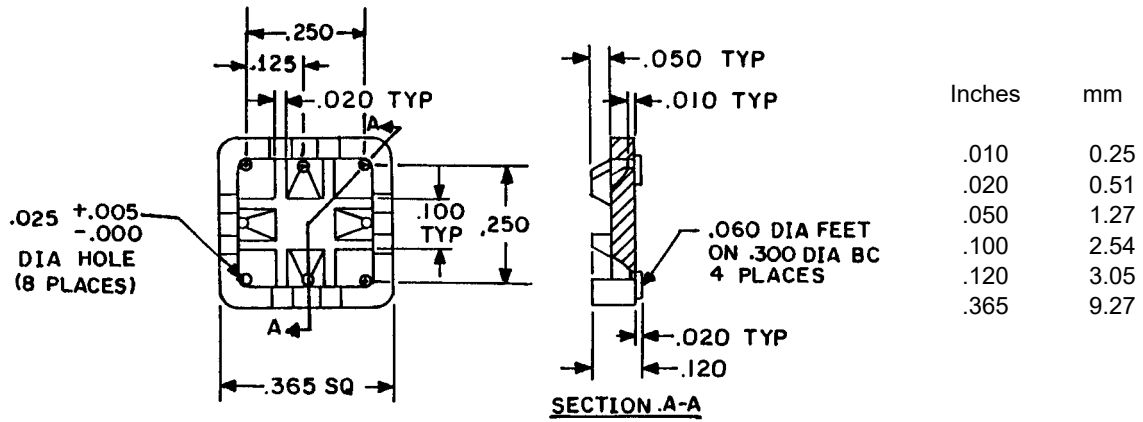


A-55485/05-007

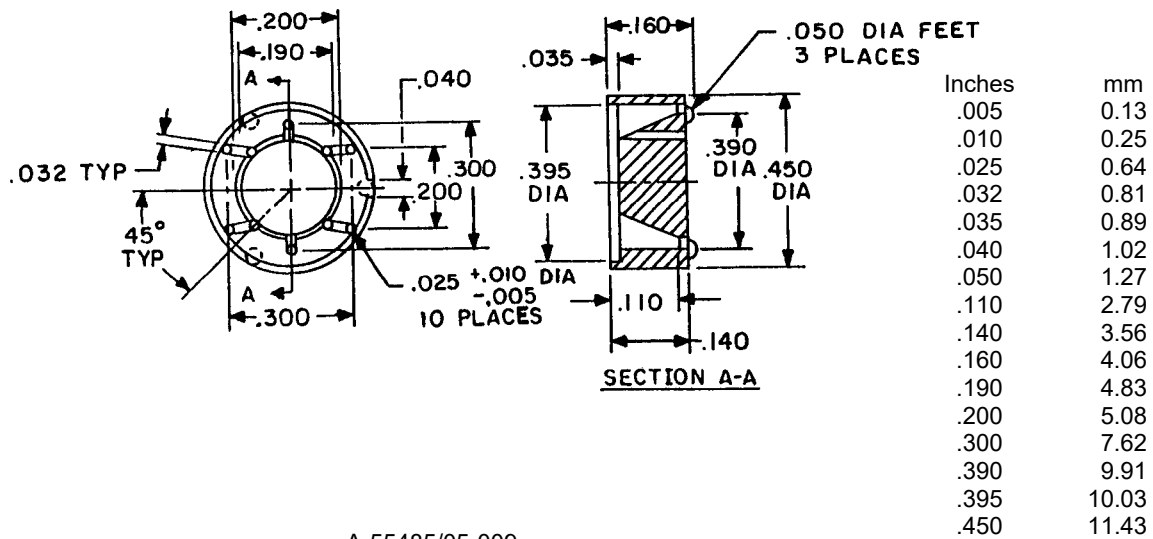
| Inches | mm    |
|--------|-------|
| .010   | 0.25  |
| .025   | 0.64  |
| .030   | 0.76  |
| .035   | 0.89  |
| .050   | 1.27  |
| .065   | 1.40  |
| .075   | 1.91  |
| .093   | 2.36  |
| .100   | 2.54  |
| .145   | 3.68  |
| .152   | 3.86  |
| .200   | 5.08  |
| .250   | 6.35  |
| .395   | 10.03 |

FIGURE 1. Configurations and dimensions - Continued.

A-A-55485/5C



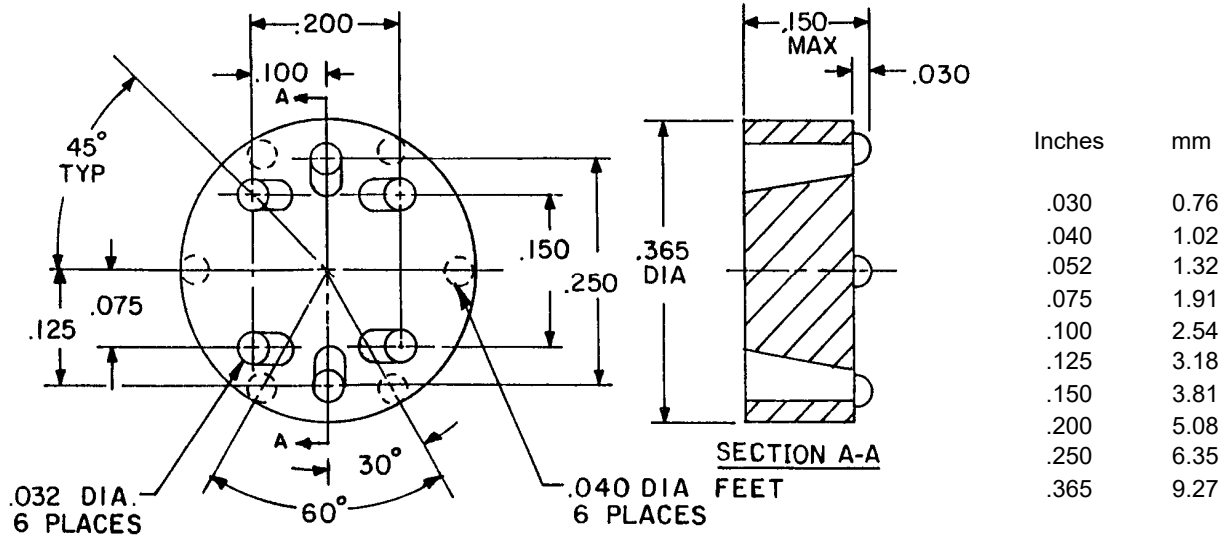
A-55485/05-008



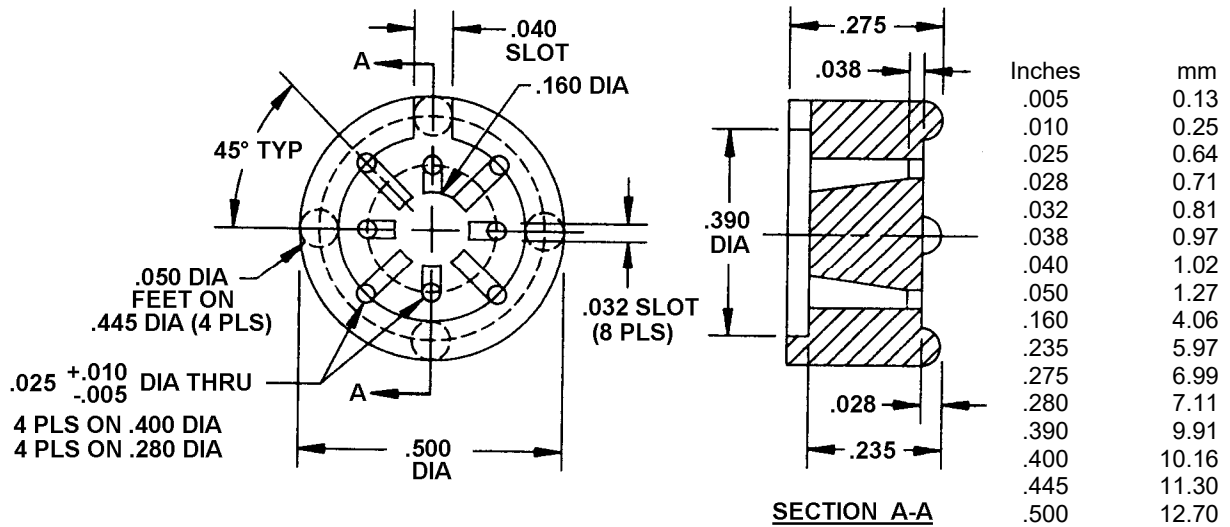
A-55485/05-009

FIGURE 1. Configurations and dimensions - Continued.

A-A-55485/5C



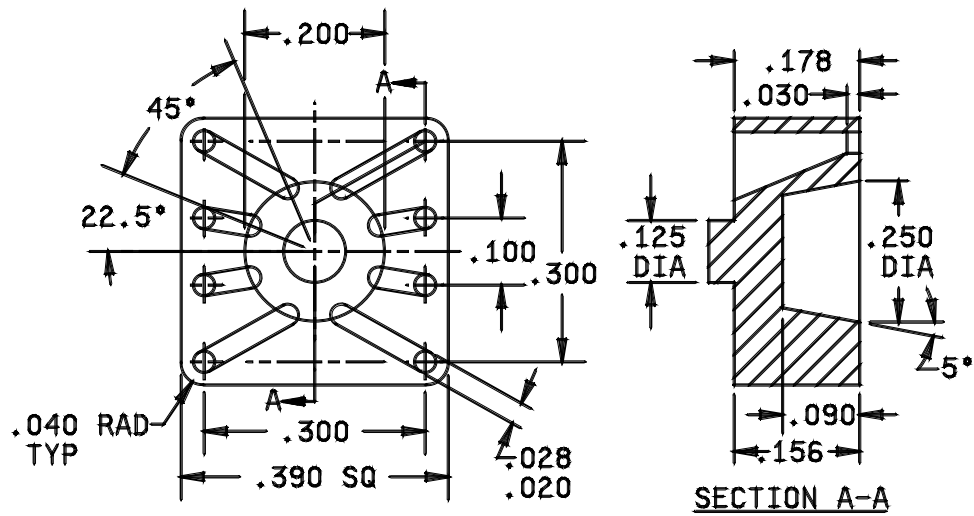
A-55485/05-010



A-55485/05-011

FIGURE 1. Configurations and dimensions - Continued.

A-A-55485/5C

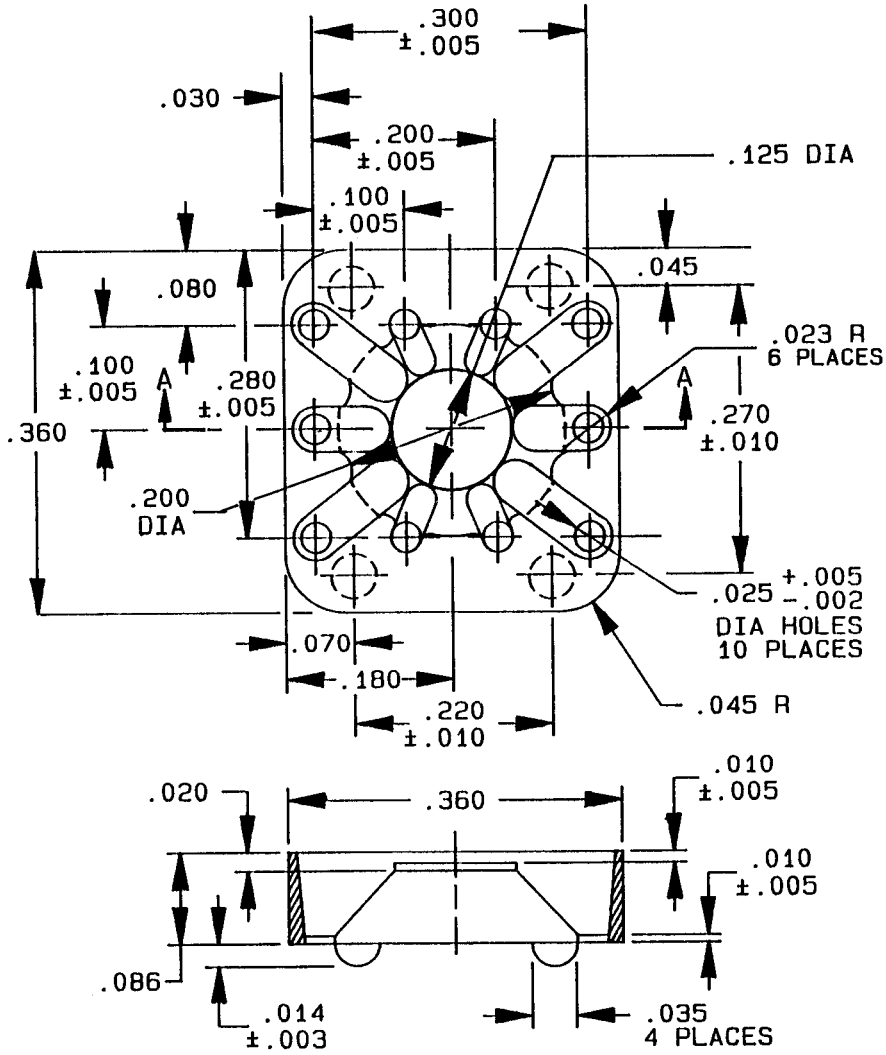


A-55485/05-012

| Inches | mm   |
|--------|------|
| .020   | 0.51 |
| .028   | 0.71 |
| .030   | 0.76 |
| .040   | 1.02 |
| .090   | 2.29 |
| .100   | 2.54 |
| .125   | 3.18 |
| .156   | 3.96 |
| .178   | 4.52 |
| .200   | 5.08 |
| .250   | 6.35 |
| .300   | 7.62 |
| .390   | 9.91 |

FIGURE 1. Configurations and dimensions - Continued.

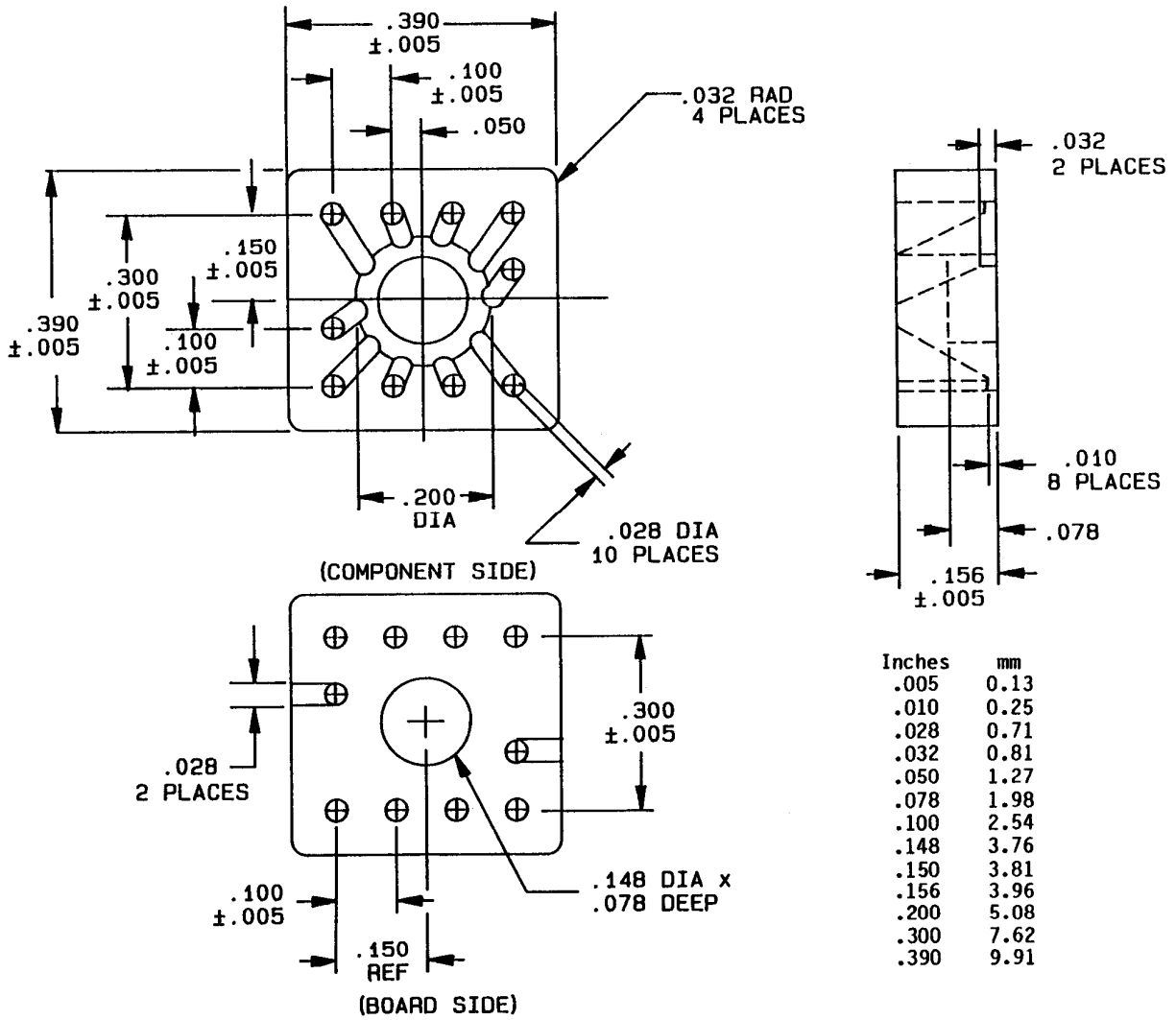




| Inches | mm   |
|--------|------|
| .002   | 0.05 |
| .003   | 0.08 |
| .005   | 0.13 |
| .010   | 0.25 |
| .014   | 0.36 |
| .020   | 0.51 |
| .023   | 0.58 |
| .025   | 0.64 |
| .030   | 0.76 |
| .035   | 0.89 |
| .045   | 1.14 |
| .070   | 1.78 |
| .080   | 2.03 |
| .086   | 2.18 |
| .100   | 2.54 |
| .125   | 3.18 |
| .180   | 4.57 |
| .200   | 5.08 |
| .220   | 5.59 |
| .270   | 6.86 |
| .300   | 7.62 |
| .360   | 9.14 |

SECTION A-A

FIGURE 1. Configurations and dimensions - Continued.



A-55485/05-014

NOTES:

1. Dimensions are in inches.
2. Metric equivalents are given for general information only.
3. Tolerance on height of pad shall be  $\pm .015$  (0.38 mm).
4. Unless otherwise specified, tolerances are  $\pm .010$  (0.25 mm) for decimals and  $\pm 1^\circ$  on angles.  $.010$  (0.25 mm) radius is permissible on corners and edges. A  $1^\circ$  draft is permitted on sides.

FIGURE 1. Configurations and dimensions - Continued.

Commercial products. As part of the market analysis and research effort, this CID was coordinated with the following manufacturers of commercial products. At the time of CID preparation and coordination, these manufacturers were known to have commercial products that would meet the requirements of this CID. (NOTE: This information should not be considered as a list of approved manufacturers or be used to restrict acquisition to only the manufacturers shown.)

| <u>MFR's CAGE</u> | <u>MFR's name and address</u>   |
|-------------------|---|
| 0ZK84             | Micro-Dimensional Products<br>199 W Spruce Street<br>Norristown, PA 19401-3863<br>(610) 239-7940<br><a href="https://www.microdimensional.com">https://www.microdimensional.com</a> |
| 21071             | Globe Plastics, Inc.<br>13477 12th Street<br>Chino, CA 91710-5206<br>(909) 464-1520<br><a href="https://www.globecomposites.com">https://www.globecomposites.com</a>                |

A-A-55485/5C

Part number (P/N) supersession data. These CID PINs supersede the following MFR's P/N's (table I) and (table II) as shown. This information is being provided to assist in reducing proliferation in the Government inventory system.

TABLE I. P/N Supersession data.

| Dash number<br>(see figure 1)<br>A-55485/05- | Manufacturers part number 1/ |               |
|--|------------------------------|---------------|
|  | CAGE<br>0ZK84                | CAGE<br>21071 |
| 001D   | 10335D                       | 10462-2       |
| 001N   | 10335N                       | 10462-1       |
| 001S   | 10335PPS                     | 10462-5       |
| 002D   | 10336D                       | 10682-2       |
| 002N   | 10336N                       | 10682-1       |
| 002S   | 10336PPS                     | 10682-5       |
| 003D   | 10510D                       | 10524-2       |
| 003N   | 10510N                       | 10524-1       |
| 003S   | 10513PPS                     | 10524-5       |
| 004D   | 10651D                       |               |
| 004N   | 10651N                       |               |
| 004S   | 10651PPS                     |               |
| 005D   | 10591D                       | 10528-2       |
| 005N   | 10591N                       | 10528-1       |
| 005S   | 10591PPS                     | 10528-5       |
| 006D   | 10609D                       | 10530-2       |
| 006N   | 10609N                       |               |
| 006S   | 10609PPS                     |               |
| 007D   | 10318D                       | 10660-2       |
| 007N   | 10318N                       | 10660-1       |
| 007S   | 10318PPS                     | 10660-5       |
| 008D   | 10272D                       |               |
| 008N   | 10272N                       |               |
| 008S   | 10272PPS                     |               |
| 009D   | 10675D                       |               |
| 009N   | 10675N                       |               |
| 009S   | 10675PPS                     |               |
| 010D   | 10175D                       | 10536-2       |
| 010N   | 10175N                       | 10536-1       |
| 010S   | 10175PPS                     | 10536-5       |
| 011D   | 10635D                       | 10314-2       |
| 011N   | 10635N                       | 10314-1       |
| 011S   | 10635PPS                     | 10314-5       |

See footnotes at end of table.

A-A-55485/5C

TABLE I. P/N Supersession data - Continued.

| Dash number<br>(see figure 1)<br>A-55485/05- | Manufacturers part number <sup>1/</sup> |               |
|--|---|---------------|
|  | CAGE<br>0ZK84                           | CAGE<br>21071 |
| 012D   | 10615D                                  |               |
| 012N   | 10615N                                  |               |
| 012S   | 10615PPS                                |               |
| 013D   | 10616D                                  | 10888-2       |
| 013N   | 10616N                                  | 10888-1       |
| 013S   | 10616PPS                                | 10888-5       |
| 014D   | 10411D                                  | 10892-2       |
| 014N   | 10411N                                  | 10892-1       |
| 014S   | 10411PPS                                | 10892-5       |

<sup>1/</sup> The manufacturer's P/N shall not be used for procurement to the requirements of this CID. At the time of preparation of this CID, the aforementioned commercial products were reviewed and could be replaced by the CID PIN shown. For actual part marking requirements see the marking paragraph.

TABLE II. MIL-M-38527/5 P/N supersession data. <sup>1/</sup>

| Superseded part number<br>M38527/05 - | Replacement CID Part number<br>A-55485/05 - |
|---------------------------------------|---|
| 001                                   | 001   |
| 002                                   | 002   |
| 003                                   | 003   |
| 004                                   | 004   |
| 005                                   | 005   |
| 006                                   | 006   |
| 007                                   | 007   |
| 008                                   | 008   |
| 009                                   | 009   |
| 010                                   | 010   |
| 011                                   | 011   |
| 012                                   | 012   |
| 013                                   | 013   |
| 014                                   | 014   |

<sup>1/</sup> Complete PIN shall include a suffix letter to denote material.

Changes from previous issue. The margins of this CID specification sheet are marked with asterisks to indicate where changes from the previous issue were made. This was done as a convenience only and the Government assumes no liability whatsoever for any inaccuracies in these notations. Bidders and contractors are cautioned to evaluate the requirements of this document based on the entire content irrespective of the marginal notations and relationship to the last previous issue.

MILITARY INTERESTS:

Custodians:

Army - CR  
Navy - EC  
Air Force - 85  
DLA - CC

CIVIL AGENCY COORDINATING ACTIVITY:

GSA - 7FXE

Preparing activity:

DLA - CC

(Project 5999-2020-007)

NOTE: The activities listed above were interested in this document as of the date of this document. Since organizations and responsibilities can change, you should verify the currency of the information above using the ASSIST Online database at <https://assist.dla.mil/>.